

CONSTRUCTION Tufting 1/10" saxony  
 STRUCTURE Tufté 1/10" saxony  
 STRUKTUR Getuftet 1/10" saxony  
 STRUCTUUR Getuft 1/10" saxony

PILE MATERIAL 100% PA 6 IMPREL®  
 COMPOSITION DU VELOURS  
 POLMATERIAL  
 POOLMATERIAAL

PRIMARY BACKING Non woven PES  
 SUPPORT Non tissé  
 TRÄGERMATERIAL Vlies  
 TUFTDOEK Felt

SECONDARY BACKING Action Back  
 DOSSIER  
 RÜCKEN  
 TAPIJTRUG

PILE WEIGHT Ca. 900 gr/m²  
 POIDS DU VELOURS  
 POLEINSATZGEWICHT  
 POOLGEWICHT

TOTAL WEIGHT Ca. 1.875 gr/m²  
 POIDS TOTAL  
 GESAMTGEWICHT  
 TOTAAL GEWICHT

PILE HEIGHT Ca. 4 mm  
 EPAISSEUR DU VELOURS  
 POLHÖHE  
 POOLHOOGTE

TOTAL HEIGHT Ca. 7 mm  
 EPAISSEUR TOTAL  
 GESAMTHÖHE  
 TOTALE DIKTE

TUFT DENSITY Ca. 170 000/m²  
 NOMBRES DE POINTS  
 NOPPENZAHL  
 AANTAL PUNTEN

PILE DENSITY Ca. 0.143 g/cm³  
 DENSITÉ DU VELOURS  
 POLROHDICHTHEIT  
 POOLDICHTHEID

CLASSIFICATION EN 1307  
 CLASSEMENT 32 - LC2  
 KLASSIFIKATION  
 CLASSIFICATIE

UPEC U3 P3 E1 C0  
 Certification CSTB: 10/276-02

CASTOR CHAIR SUITABILITY EN 985  
 CHAISE À ROULETTES A: intensive use  
 STUHLROLLENEIGNUNG  
 ROLSTOELGESCHIKTHEID

STAIR SUITABILITY EN 1963  
 ESCALIERS A: intensive use  
 TREPPENEIGNUNG  
 TRAPPENGESCHIKTHEID

PERMANENTLY ANTISTATIC ISO 6356  
 ANTISTATIQUE PERMANENT ≤ 2 kV  
 PERMANENT ANTISTATISCH  
 PERMANENT ANTISTATISCH

IMPACT NOISE RATING ISO 140-8  
 ISOLATION PHONIQUE 24 dB ΔLw  
 TRITTSCHALLVERBESSERUNG  
 GELUIDSISOLATIE

SOUND ABSORPTION ISO 354  
 ABSORPTION PHONIQUE 0.20 αw  
 SCHALLABSORPTIONSGRAD  
 GELUIDSABSORPTIE

THERMAL RESISTANCE ISO 8302  
 RÉSISTANCE THERMIQUE 0.15 m² K/W  
 WÄRMEDURCHLASSWIDERSTAND  
 WARMTEDOORLAATWEERSTAND

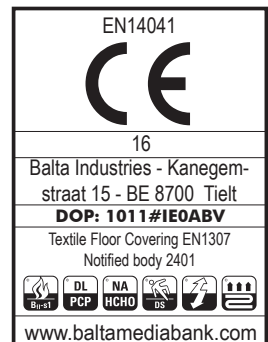
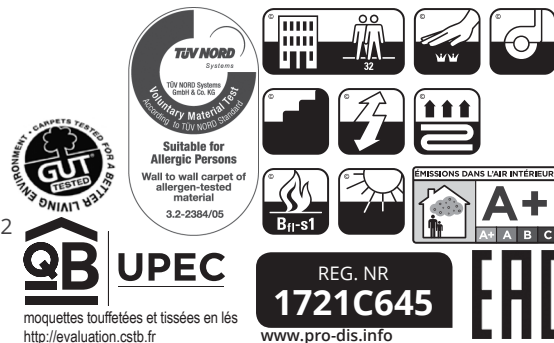
FASTNESS TO LIGHT ISO 105-B02  
 SOLIDITÉ A LA LUMIÈRE ≥ 5-6  
 LICHTECHTHEIT  
 LICHTECHTHEID

COLOUR FASTNESS TO WATER EN ISO 105-E01  
 SOLIDITÉ À L'EAU ≥ 4-5  
 WASSERECHTHEIT  
 WATERECHTHEID

FIRE RESISTANCE EN 13501-1  
 COMPORTEMENT AU FEU Bfl-s1 (if glued)  
 BRENNVERHALTEN  
 BRANDGEDRAG

RUBBING FASTNESS EN ISO 105-X12  
 SOLIDITÉ AU FROTTEMENT ≥ 4  
 REIBECHTHEIT  
 WRIJFECHTHEID

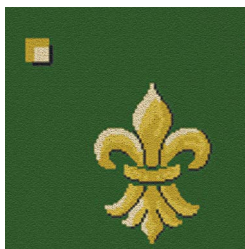
WIDTH EN ISO 3018  
 LARGEUR ca. 400 cm  
 BREITE  
 BREEDTE



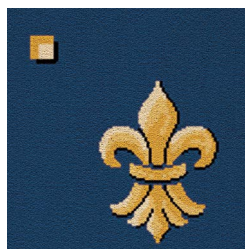


↔ 32 X ↕ 32 CM

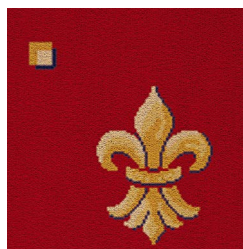
23



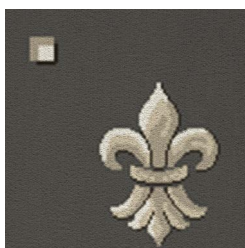
77



10



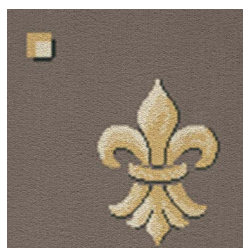
47



39



143



195

