

|                          |   |
|--------------------------|---|
| CONSTRUCTION             | Tufting 1/10" saxony                            |
| STRUCTURE                | Tufté 1/10" saxony                              |
| STRUKTUR                 | Getuftet 1/10" saxony                           |
| STRUCTUUR                | Getuft 1/10" saxony                             |
| PILE MATERIAL            | 100% PA 6 IMPREL®                               |
| COMPOSITION DU VELOURS   |   |
| POLMATERIAL              |   |
| POOLMATERIAAL            |   |
| PRIMARY BACKING          | Non woven PES                                   |
| SUPPORT                  | Non tissé                                       |
| TRÄGERMATERIAL           | Vlies   |
| TUFTDOEK                 | Felt  |
| SECONDARY BACKING        | Action Back                                     |
| DOSSIER                  |   |
| RÜCKEN                   |   |
| TAPIJTRUG                |   |
| PILE WEIGHT              | Ca. 900 gr/m <sup>2</sup>                       |
| POIDS DU VELOURS         |   |
| POLEINSATZGEWICHT        |   |
| POOLGEWICHT              |   |
| TOTAL WEIGHT             | Ca. 1.875 gr/m <sup>2</sup>                     |
| POIDS TOTAL              |   |
| GESAMTGEWICHT            |   |
| TOTAAL GEWICHT           |   |
| PILE HEIGHT              | Ca. 4 mm  |
| EPAISSEUR DU VELOURS     |   |
| POLHÖHE                  |   |
| POOLHOOGTE               |   |
| TOTAL HEIGHT             | Ca. 7 mm  |
| EPAISSEUR TOTAL          |   |
| GESAMTHÖHE               |   |
| TOTALE DIKTE             |   |
| TUFT DENSITY             | Ca. 170 000/m <sup>2</sup>                      |
| NOMBRES DE POINTS        |   |
| NOPPENZAHL               |   |
| AANTAL PUNTEN            |   |
| PILE DENSITY             | Ca. 0.143 g/cm <sup>3</sup>                     |
| DENSITÉ DU VELOURS       |   |
| POLROHDICHTÉ             |   |
| POOLDICHTHEID            |   |
| CLASSIFICATION           | EN 1307   |
| CLASSEMENT               | 32 - LC2  |
| KLASSIFIKATION           |   |
| CLASSIFICATIE            |   |
| UPEC                     | U3 P3 E1 C0<br>Certification CSTB:<br>10/276-03 |
| CASTOR CHAIR SUITABILITY | EN 985  |
| CHAISE À ROULETTES       | A: intensive use                                |
| STUHLROLLENEIGNUNG       |   |
| ROLSTOELGESCHIKTHEID     |   |
| STAIR SUITABILITY        | EN 1963   |
| ESCALIERS                | A: intensive use                                |
| TREPPENEIGNUNG           |   |
| TRAPPENGESCHIKTHEID      |   |

PERMANENTLY ANTISTATIC ISO 6356  
ANTISTATIQUE PERMANENT ≤ 2 kV  
PERMANENT ANTISTATISCH  
PERMANENT ANTISTATISCH

IMPACT NOISE RATING ISO 140-8  
ISOLATION PHONIQUE 24 dB ΔLw  
TRITTSCHALLVERBESSERUNG  
GELUIDSISOLATIE

SOUND ABSORPTION ISO 354  
ABSORPTION PHONIQUE 0.20 Cw  
SCHALLABSORPTIONSGRAD  
GELUIDSABSORPTIE

THERMAL RESISTANCE ISO 8302  
RÉSISTANCE THERMIQUE 0.15 m<sup>2</sup> K/W  
WÄRMEDURCHLASSWIDERSTAND  
WARMTEDOORLAATWEERSTAND

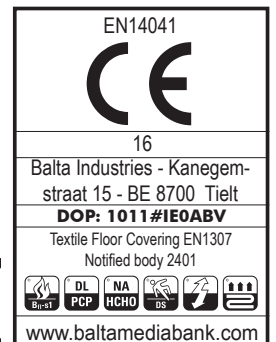
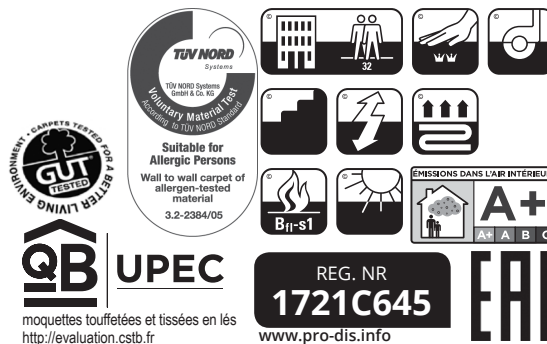
FASTNESS TO LIGHT ISO 105-B02  
SOLIDITÉ A LA LUMIÈRE ≥ 5-6  
LICHTECHTHEIT  
LICHTECHTHEID

COLOUR FASTNESS TO WATER EN ISO 105-E01  
SOLIDITÉ À L'EAU ≥ 4-5  
WASSERECHTHEIT  
WATERECHTHEID

FIRE RESISTANCE EN 13501-1  
COMPORTEMENT AU FEU Bfl-s1 (if glued)  
BRENNVERHALTEN  
BRANDGEDRAG

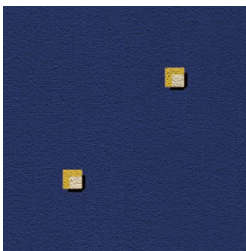
RUBBING FASTNESS EN ISO 105-X12  
SOLIDITÉ AU FROTTEMENT ≥ 4  
REIBECHTHEIT  
WRIJFECHTHEID

WIDTH EN ISO 3018  
LARGEUR ca. 400 cm  
BREITE  
BREEDTE

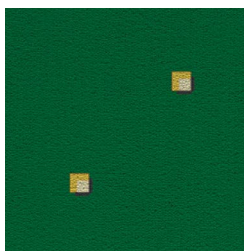




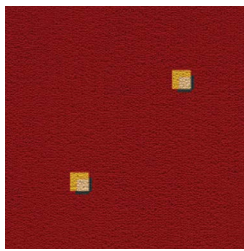
77



23

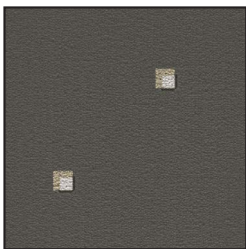


10

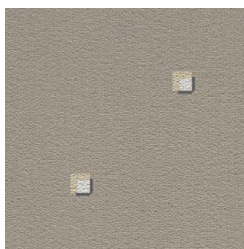


↔ 12 X ↓ 12 CM

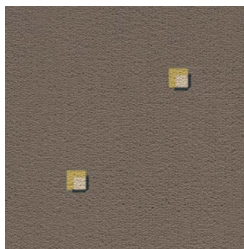
47



39



143



195

