

Gauge	1/10	
Manufacturing	Graphics cut	
Pile description	PP Twistex	
Primary backing	Woven	
Pile weight	690 gr/m ²	
Number of tufts	196.850 /m ²	
Secondary backing	Actionback	Impervious gel back
Width	400 cm	400 cm
Total weight	1706 gr /m ²	2150 gr/m ²
Total height	7 mm	7,5 mm
Pile In/Out	In	Out
Roll length	30 m	30 m
DOP	1087#215200/SKL/2I	1087#21500/SKL/P
Fire classification	Cfl-s1	Dfl-s1
Use classification	33	33
TOG rating	0,7	0,65

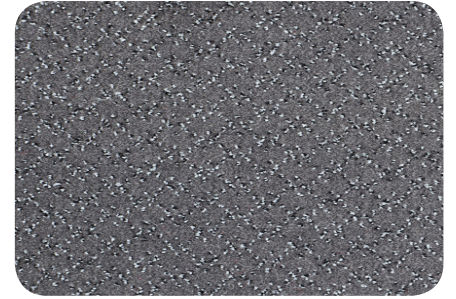
Available colours	Actionback 400 cm	140 141 158 455 887 890 962
	Impervious gel back 400 cm	140 141 158 455 887 890 962

Colour legend	140 Ash	141 Black	158 Anthracite
	455 Rustic Red	887 Oriental Blue	890 Marine
	962 Teak		



These details are approximate. Complete specification details and associated certificates together with tolerances applying to the above can be provided upon request. We reserve the right to modify technical specifications without prior notice. Due to method of manufacture perfect pattern and/or colour matching can not be guaranteed. In cut-pile carpeting, in rare cases, shading/pile reversal may occur without affecting its fitness for use. Shading/pile reversal can not be considered as a manufacturing or a material defect and will not affect the durability of the carpet.





140 - 400 cm



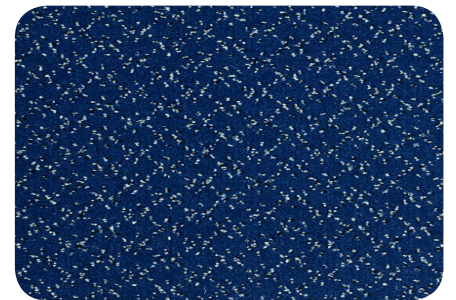
141 - 400 cm



158 - 400 cm



455 - 400 cm



887 - 400 cm



890 - 400 cm



962 - 400 cm